

Week #5 Love is in the air



Soon it will be Valentine's Day and this sweater features hearts. It's another cardigan knit in one piece and has whimsical hearts knitted into it and is made using only 3 double pointed needles. This is so much less awkward than using 4 or 5 double pointed needles on such a tiny garment.

Sweater measures approx. 3"

Download the pattern here

Materials:

Size 2 Double pointed needles (set of 3)

Sport Weight, dk, lace or DMC #5 pearl cotton weight yarn. 30 yards for main color and 1 yard of white.

Yarn used in sample is a cotton sport weight yarn and Lion Brand Bon Bons miniature doll coat hanger or Large paper clip to make your own coat hanger.

4 stitch markers

Abbreviations

st= stitch

pm= place marker

sm = slip marker

inc.= increase. Increases are made by knitting in front and back of stitch.

Cast on 20 stitches on one needle.

Row 1 p1, k1 across

Row 2: p1, k1 across

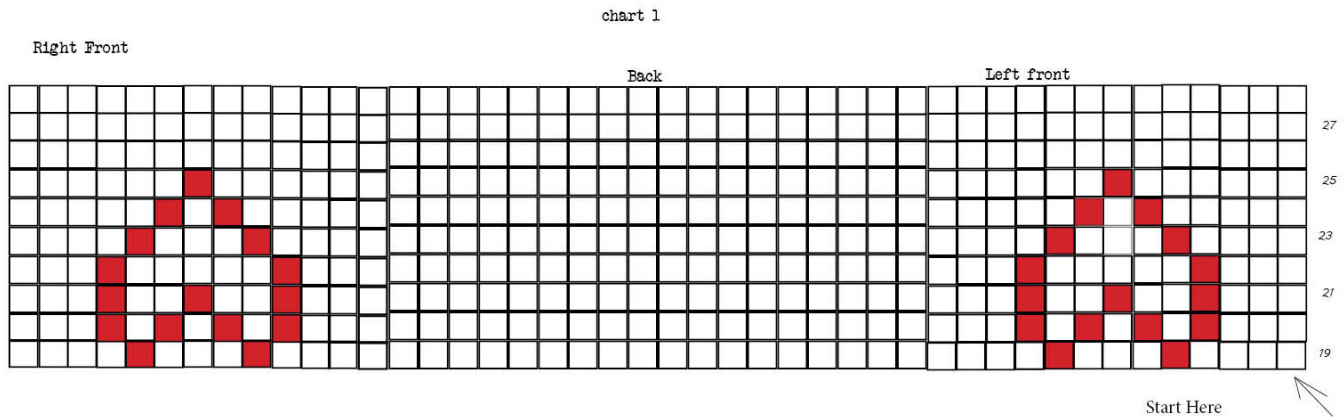
Row 3: Set up row for increases. k6 pm(left front) k2 pm (sleeve), k4 pm (back) , k2 pm (sleeve) k6 (right front)

Row 4: and every even row: Purl across, slipping markers as you work your way across the row.

Row 5: K to stitch before first marker, inc in stitch , sm, inc in stitch after marker, continue inc in the st before and the st after each marker, k to end. (28 sts)

Row 6: Repeat Row 4.

Repeat Rows 5 and 6 six more times until there are 13 sts on each front, 16 sts on each sleeve and 18 sts on the back. (76 sts) ending with row 6..



Row 19: Begin Chart #1(Starting at Row 19) and Knit to first marker, slip sleeve sts onto a scrap piece of yarn, continue chart knitting back sts, slip sleeve sts onto a scrap of yarn. continue chart Knitting to the end. (44 sts)

Chart is read from right to left on odd rows and from left to right on even rows

Continue Chart through Row 28 as follows:

Row 20, 22, 24, 26, 28 P across following chart for color placement

Row 21, 23, 25, 27: K across following chart for color placement

Row 29 and 30: K1, P1 across

Bind off all sts.

Sleeves:

Slip 16 sts for first sleeve from waste thread onto 2 double pointed needles (8 sts on each). Hold the 2 needles parallel with the working yarn on the back needle. With a 3rd double pointed needle begin knitting on the first stitch on the front needle, K to end of first needle,turn and Knit stitches from second needle 2nd needle, 1 round completed.

Knit 7 more rounds

Next 2 rounds: k1, p1 across both needles.

Bind off all stitches.

Repeat for second sleeve.

Finishing:

Weave in all ends.

Sew up 3/4 of the fronts together by overlapping the right side onto the left side, leaving about 3/4" to 1" open at the top. Using white yarn, make buttons by embroidering french knots evenly spaced as shown in picture.

Hang on tree with miniature coat hanger.