

Week #37 Tree



The sweater is knit all in one piece with no seaming. It is made using only 3 double pointed needles. . You knit in the round as you would with 4 or 5 needles but it is so much less awkward on such a tiny garment. Sweater is approx. 3" tall

Materials:

Size 2 Double pointed needles (set of 3)

Sport Weight, dk, lace or DMC #5 pearl cotton weight yarn. 30 yards of main color. 5 yards of contrast color for Tree.

miniature doll coat hanger or Large paper clip to make your own coat hanger.

large darning needle

Abbreviations:

st= stitch

pm= place marker

sm = slip marker

inc.= increase. Increases are made by knitting in front and back of stitch.

k= knit

p= purl

st st = stockinette stitch

MC = Main Color

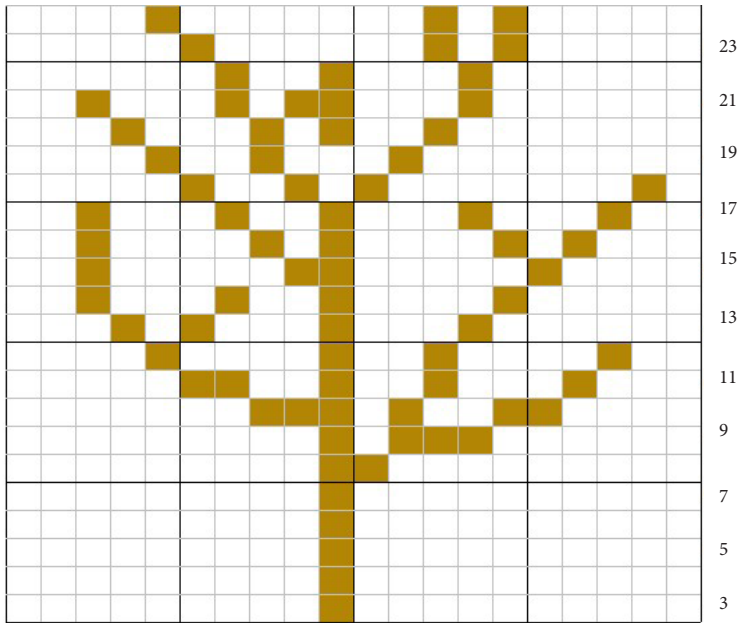
CC = Contrast Color

With main color cast on 40 stitches and divide onto 2 needles, 20sts on first needle (front of sweater) , 20 sts on second needle (back of sweater)

Join, knitting in the round on 2 needles, using a 3rd needle to knit the stitches.

Rounds 1-2: with main color, p1, k1 across

Front of Sweater



Start Here

Rounds 3-16 Work chart over first 20 sts only , k last 20 sts with main color.

Divide for sleeves, work on first 20 sts only knitting and purling back and forth while following chart through row 24.

Rows: 17, 19, 21, 23, Knit across first 20 sts.

Rows: 18, 20, 22, 24 , Purl 20 sts.

Break yarn. Join new yarn (main color) and work 8 rows in St St on back 20 sts .

Join Front to back again.

Round 25: Knit

Round 26: K2, K2 tog. across, ending K2 tog.

Round 27 : Knit

Round 28: K2, K2 tog. across

Rounds 29 and 30: K1, P1 across

Bind off all sts in ribbing.

Sleeves

Pick up 16 sts around arm hole, starting at underarm and divide onto 2 needles. Join:

Knit 10 rounds

Next 2 rounds: K1, P1 around

Repeat for second sleeve

Bind off all stitches in ribbing and repeat for second sleeve.

Finishing:

Weave in all ends and stitch up any holes under the armhole. Add miniature coat hanger and hang on tree.